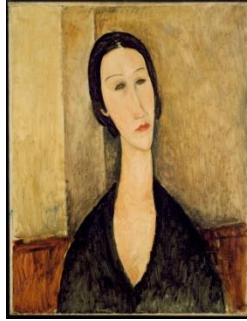


MODIGLIANI SELF PORTRAIT



Objectives:

- T.S.W. Explore portraits by Amadeo Modigliani.
- T.S.W. Experiment with chalk pastel techniques.
- T.S.W. Apply knowledge of Modigliani's portraits and chalk pastels to create a self-portrait inspired by his work.

Procedures:

1. Rough Draft self-portrait in pencil (add color to plan).
2. FINAL self-portrait:
 - a. Fold Paper
 - b. Pencil outline (find characteristics that make you unique)
 - c. Chalk pastels (use mixing and blending techniques)
 - d. Reinforce outlines with black (chalk or charcoal)

Grading Criteria:

- Self-portrait must accurately resemble the characteristics of Modigliani's style (Elongated features, hollow eyes, neutral tones).
- Capture similarities of yourself in your portrait

*Refer to general grading rubric.